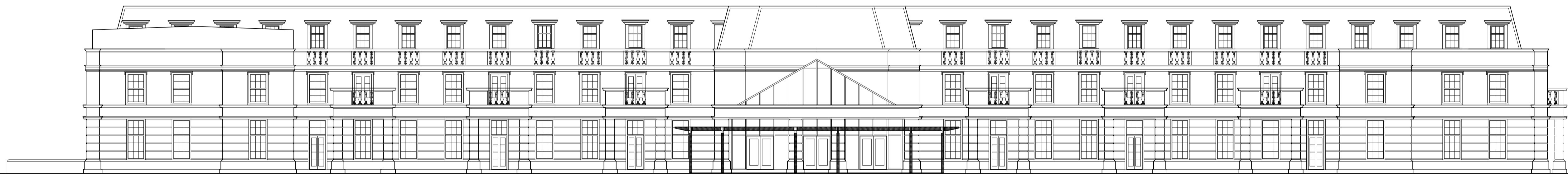


Approach elevation (North)

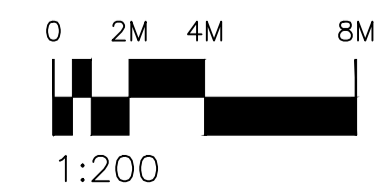
Finishing materials  
 Flat roofs: Dark grey single ply roofing membrane  
 Mansard: Natural Westmorland green slate with lead flashings  
 Mansard windows: White powder coated aluminium external finish with lead cheeks  
 Walls and parapet walls: Brick and artstone details to upper level  
 First floor windows and doors: White powder coated aluminium external finish in artstone surrounds  
 Lower walls: Artstone walling.  
 Ground floor windows and doors: White powder coated aluminium external finish in artstone walling  
 Columns: artstone columns.



Rear elevation (South)


Finishing materials  
 Flat roofs: Dark grey single ply roofing membrane  
 Mansard: Natural Westmorland green slate with lead flashings  
 Mansard windows: White powder coated aluminium external finish with lead cheeks  
 Walls and parapet walls: Brick and artstone details to upper level  
 First floor windows and doors: White powder coated aluminium external finish in artstone surrounds  
 Lower walls: Artstone walling.  
 Ground floor windows, doors and orangery roof: White powder coated aluminium external finish in artstone walling  
 Columns: artstone columns.

# HOTEL ELEVATIONS - 1



Revisions				
LETTER	REVISION	DATE	BY	DATE
D	First issue	2015/11/03		
A	Revised generally.	2016/03/10		
B	Planning issue	2016/05/10		
C	Planning comments addressed.	2016/05/17		

	Top Floor, Oriel House Bishop Street STOCKTON-ON-TEES TS18 1SW T: 01642 674203 F: 01642 818153 E: enquiries@jomast.co.uk			
	PROJECT <b>WYNYARD – WYNYARD HOTEL AND SPORTING ACADEMY</b>			
DRAWING TITLE <b>HOTEL – ELEVATIONS 1</b>				
DRAWN AGS	PAPER SIZE A1 SCALE (mm) 1:200	OTHER SCALE (mm) 1:400	OTHER SCALE (mm) 1:400	OTHER SCALE (mm) 1:400
JOB NUMBER 96138		DRAWING NUMBER + REVISION 15_C		STATUS